

PRODUCT DETAILS

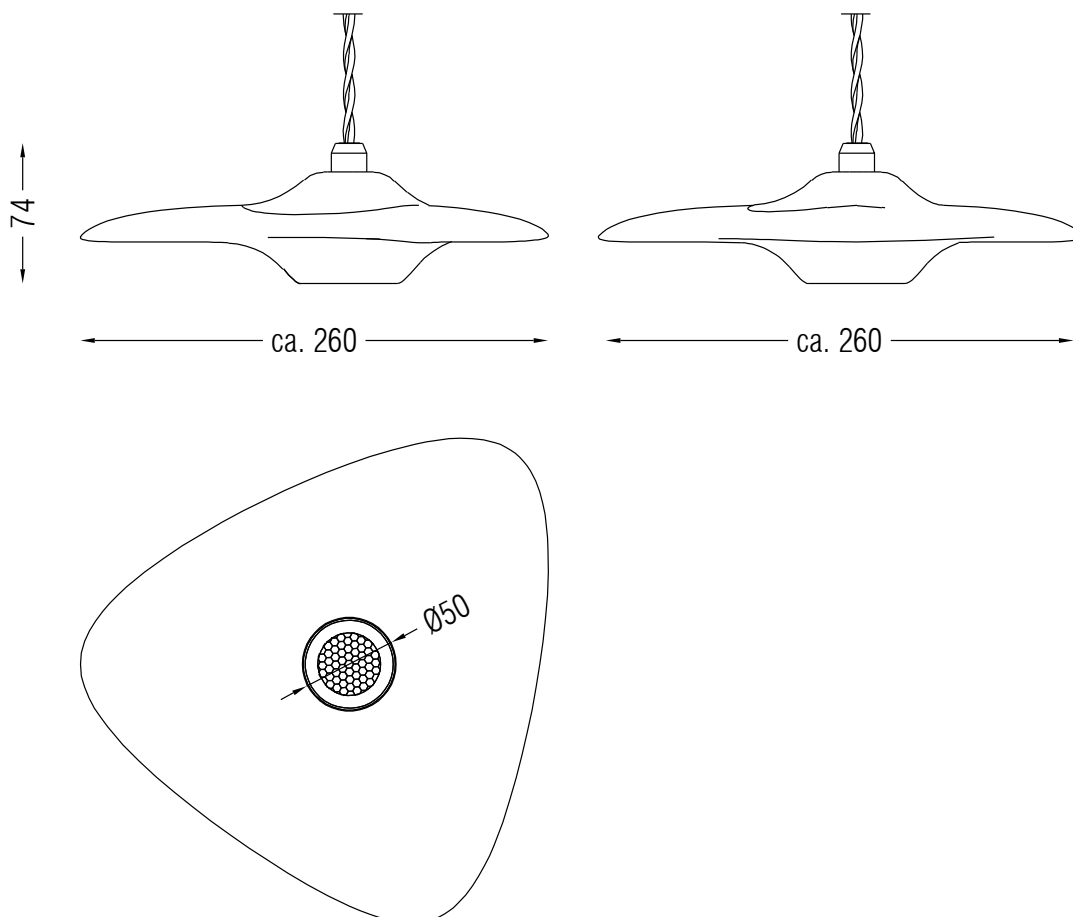
Instable equilibrium and biomorphic forms, combined with the timeless elegance of oak wood, make Callista a unique collection. The various finishes offer numerous combination possibilities for classic and contemporary interiors.

SPECIFICATIONS

MAX 5.6W	500 MA	BUILT IN LED	IP20
----------	--------	--------------	------

PRODUCT CODE	LENGTH	WIDTH	HEIGHT	WEIGHT	MATERIAL	COLOUR
CALLISTA-M-MIDNIGHT-PEN-00-DB	260mm	260mm	74mm	1,200 kg	Oak	Midnight

INSIDE THE BOX: WHAT'S INCLUDED



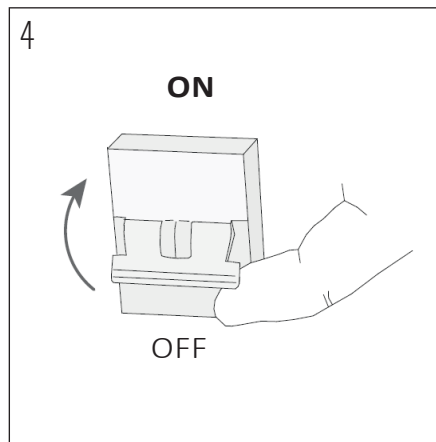
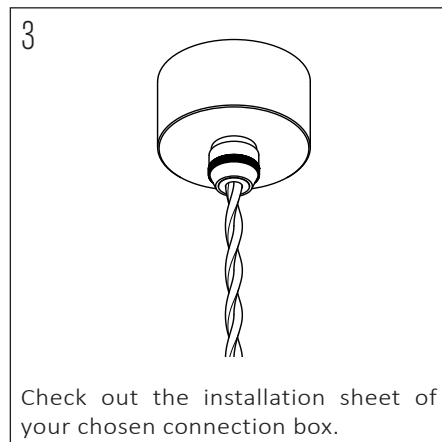
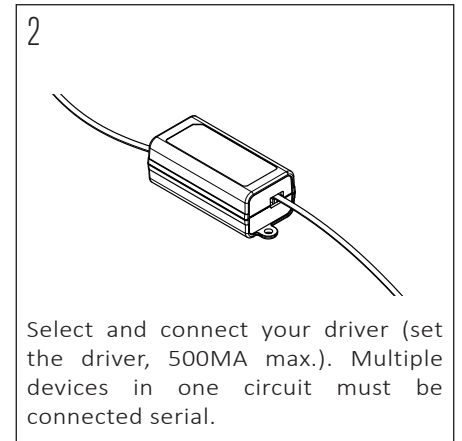
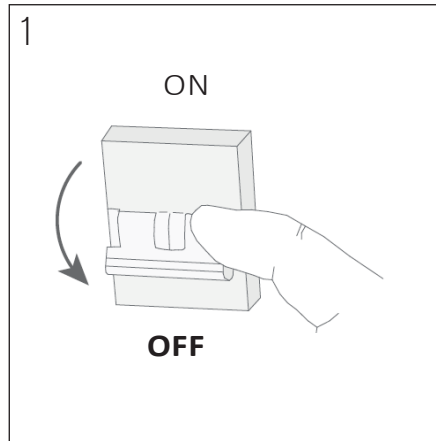
INSTALLATION GUIDE

The installation of the product depends on the used canopy, please check out the installation sheets of your canopy.

This product may only be installed by an authorised electrical installer.

Make sure there are no other cables close by the place of the power cables.

Ensure to switch OFF the fuse before the installation



Be sure the installation is done right before switching ON the fuse.

The appliance is ready for use, enjoy the light.

OTHER IMPORTANT INFORMATION

The warranty is invalidated when the device is opened. The lamp in the appliance must only be changed by the manufacturer. Children should be discouraged from playing with the lights. Mount the appliance on dry surfaces, otherwise it may cause discolouration of the finish. Metal finishes should only be cleaned with a soft, dry cloth. Do not use polishes or abrasives. Keep this installation sheet for future uses.