

PRODUCT DETAILS

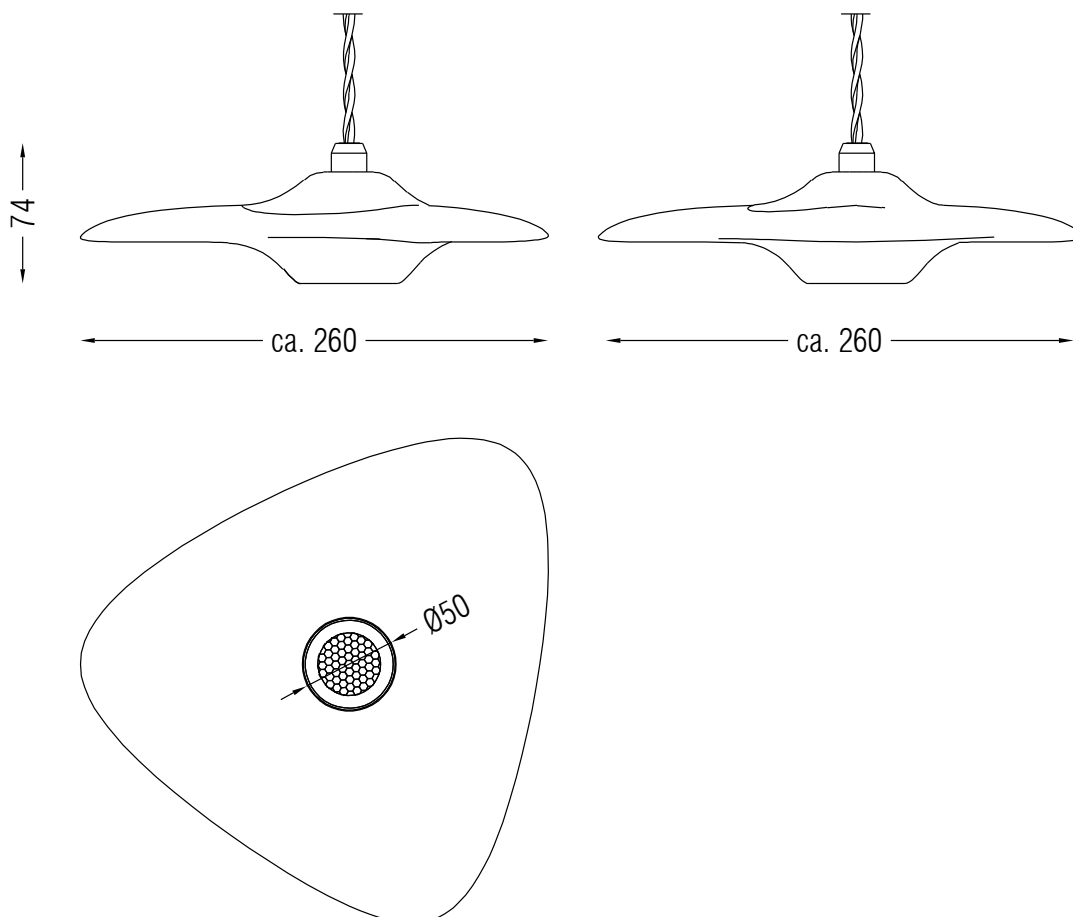
Instable equilibrium and biomorphic forms, combined with the timeless elegance of oak wood, make Callista a unique collection. The various finishes offer numerous combination possibilities for classic and contemporary interiors.

SPECIFICATIONS

MAX 5.6W	500 MA	BUILT IN LED	IP20
----------	--------	--------------	------

PRODUCT CODE	LENGTH	WIDTH	HEIGHT	WEIGHT	MATERIAL	COLOUR
CALLISTA-M-ESPRESSO-PEN-00-DB	260mm	260mm	74mm	1,200 kg	Oak	Espresso

INSIDE THE BOX: WHAT'S INCLUDED



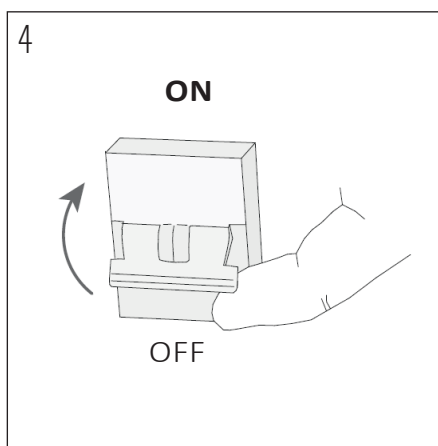
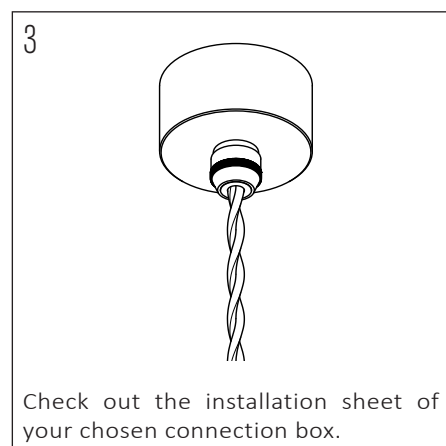
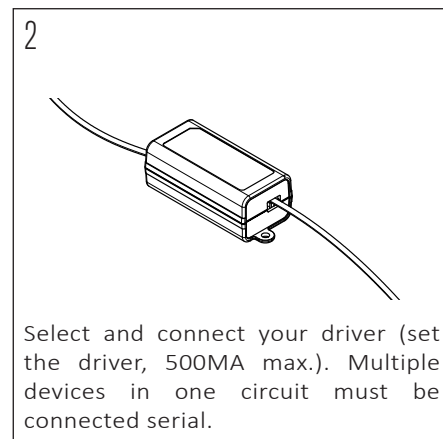
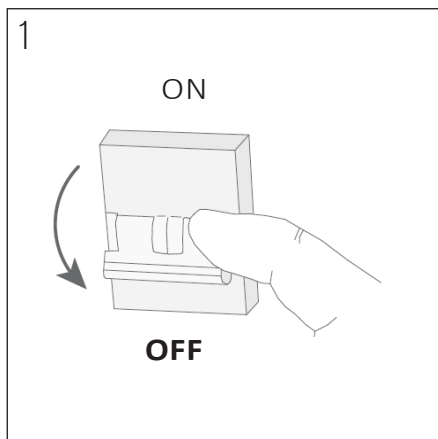
INSTALLATION GUIDE

The installation of the product depends on the used canopy, please check out the installation sheets of your canopy.

This product may only be installed by an authorised electrical installer.

Make sure there are no other cables close by the place of the power cables.

Ensure to switch OFF the fuse before the installation



Be sure the installation is done right before switching ON the fuse.

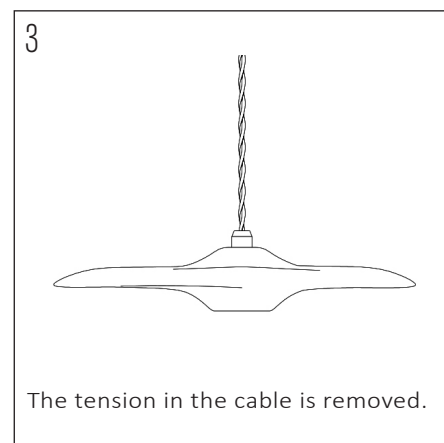
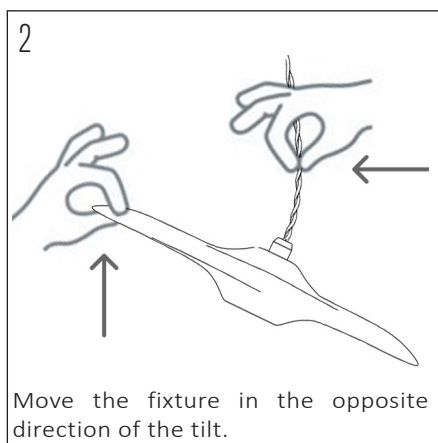
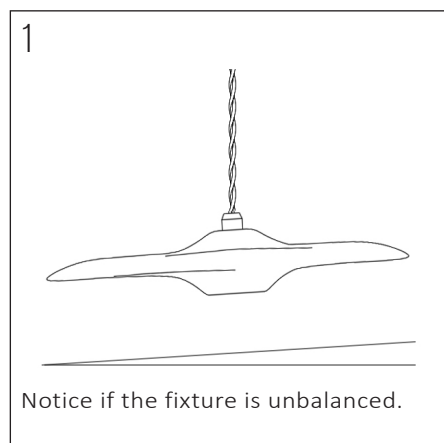
The appliance is ready for use, enjoy the light.

BALANCING THE FIXTURE

The model is perfectly balanced; however, we refer to an unstable equilibrium for this collection.

The factor that can cause the Callista to hang at an angle is the twisted power cable.

During installation, the power cable is attached to the fixture. While connecting, screwing in, positioning, etc., a slight torsion can occur in the cable, which may place tension on the fixture. This minimal tension can cause the Callista to become unbalanced. To correct this, gently hold the Callista and slightly move the fixture in the opposite direction of the tilt. This will release the tension or shift it to the other side, allowing the fixture to hang evenly again. For clarification, see the sketch: hold the fixture, tilt it in the opposite direction, and feel free to go beyond the center point if the desired effect is not immediately achieved.



Optical illusion caused by the asymmetrical shape is another phenomenon that can occur. When three shapes are aligned and the longest side of each fixture points in a different direction, it can create the illusion that something is off. But it is precisely this mysterious character that is the strength of the concept. Often, it is enough to look at the arrangement from a different angle, which allows you to experience the whole in a new and different way.

In very rare cases, the cause could be a difference in the specific weight of the wood. If the issue is not resolved after testing with the instructions above, we may need to consider other options to find a solution.

I hope this provides enough information for you to make the necessary adjustments together with the installer of these fixtures and to address the customer's feedback. If there is anything else I can do, I am always available to offer additional advice and support.

OTHER IMPORTANT INFORMATION

The warranty is invalidated when the device is opened. The lamp in the appliance must only be changed by the manufacturer. Children should be discouraged from playing with the lights. Mount the appliance on dry surfaces, otherwise it may cause discolouration of the finish. Metal finishes should only be cleaned with a soft, dry cloth. Do not use polishes or abrasives. Keep this installation sheet for future uses.